

Industrial MILL GIN STORES

IMGS



www.yuzuki.co.in



YuzukiTM
Delivering Value Through Precision

Calipers

Vernier Caliper (L.C. 0.02MM/0.001")

0-150mm/6" 0-200mm/8" 0-300mm/12"
 0-450mm/18" 0-600mm/24" 0-1000mm/40"
 0-1500mm/60" 0-2000mm/80"
 0-3000mm/120" 0-4000mm/160"
 0-5000mm/200"

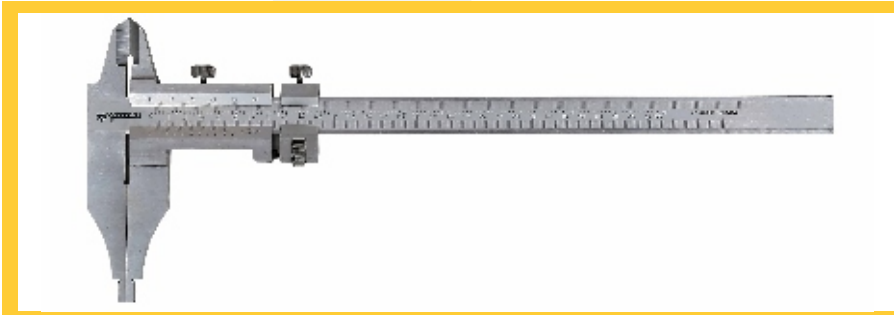
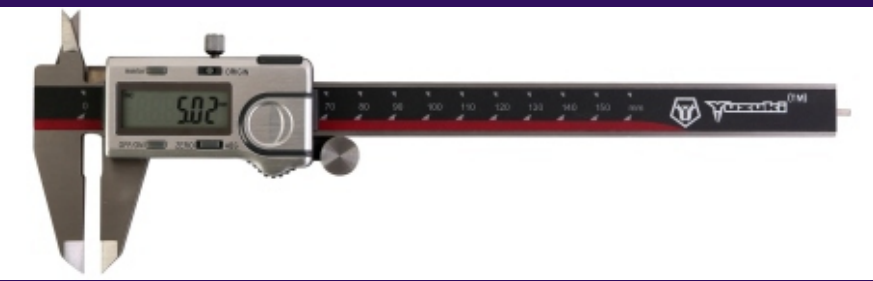


Dial Caliper (L.C. 0.02MM)

0-150mm 0-200mm
 0-300mm 0-450mm
 0-600mm 0-1000mm

Digimatic Caliper (L.C. 0.01MM/0.0005")

0-150mm/6"* 0-200mm/8"*
 0-300mm/12"* 0-450mm/18"*
 0-600mm/24" 0-1000mm/40"
 * Carbide Tipped Available



Long Jaw Caliper (L.C. 0.02MM/0.001")

0-300mm/12" (100mm Jaw)
 0-600mm/24" (200mm Jaw)

Digimatic Caliper IP67 (L.C. 0.01MM/0.0005")

0-150mm/6"
 0-200mm/8"
 0-300mm/12"



Digimatic Inside Groove Caliper (L.C. 0.01MM/0.0005")

14-150mm 17-300mm
 15-200mm 24-150mm*
 25-150mm (90mm Jaw Length) 30-300mm*
 (* Round Dia)

Calipers

Digimatic Outside Groove Caliper (L.C. 0.01MM/0.0005")

0-150mm
0-300mm



Vernier Depth Gauge (L.C. 0.02MM)

0-150mm* 0-200mm* 0-300mm*
0-600mm 0-1000mm
(* Hook type also available)

Digimatic Depth Gauge (L.C. 0.01MM/0.0005")

0-150mm/6" 0-200mm/8"
0-300mm/12" 0-600mm/24"

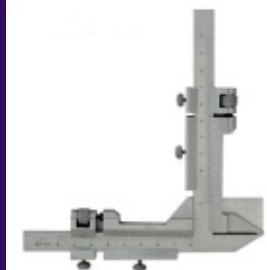


Digimatic Gear tooth Caliper (L.C. 0.01MM/0.0005")

1-25 Module
5-50 Module

Gear Tooth Vernier Caliper (L.C. 0.02MM)

1-26 Module



Pistol Caliper • Inside Groove Caliper • Inside & Outside Diameter Gauge



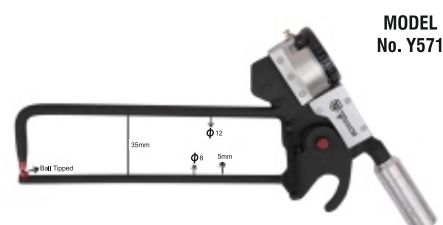
MODEL
No. Y582



MODEL
No. Y540



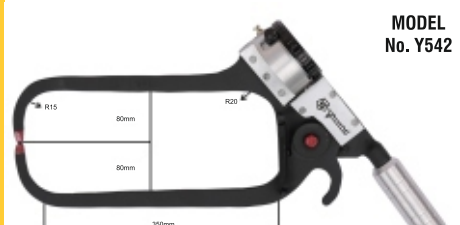
MODEL
No. Y561



MODEL
No. Y571



MODEL
No. Y551



MODEL
No. Y542

Height Gauges



**Vernier Height Gauge
(L.C. 0.02MM/0.001")**

0-300mm/12"
0-450mm/18"
0-600mm/24"
0-1000mm/40"
0-1500mm/60"

**Double Column
Electronic Height Gauge
with Hand Wheel
(L.C. 0.01MM/0.0005")**

0-300mm/12"
0-600mm/24"



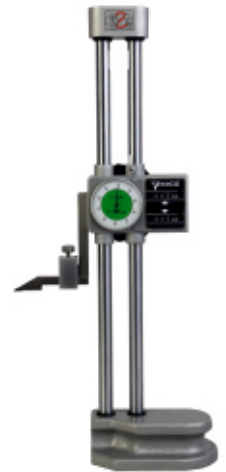
**Single Column
Electronic Height Gauge
with Side Hand Wheel
(L.C. 0.01MM/0.0005")**

0-300mm/12"
0-600mm/24"



**Double Column
Digit Dial Height Gauge
with Hand wheel
(L.C. 0.01MM)**

0-300mm
0-450mm
0-600mm



Micrometer

**Outside Micrometer
(L.C. 0.01MM)**

0-25mm	25-50mm	50-75mm	75-100mm
100-125mm	125-150mm	150-175mm	175-200mm
200-225mm	225-250mm	250-275mm	275-300mm



**Outside Micrometer Heavy Duty
(L.C. 0.01MM)**

0-25mm	25-50mm	50-75mm	75-100mm
100-125mm	125-150mm	150-175mm	175-200mm
200-225mm	225-250mm	250-275mm	275-300mm



Micrometer

Micrometers

Electronic Micrometer (L.C. 0.001MM/0.00005")

0-25mm/0-1" 25-50mm/1-2"
50-75mm/2-3" 75-100mm/3-4"



Adjustable Outside Micrometer (L.C. 0.01MM)

0-50MM	0-100MM	0-150MM	150-300MM
100-200MM	300-400mm	400-500mm	500-600mm
600-700mm	700-800mm	800-900mm	900-1000mm
1000-1200mm	1200-1400mm	1400-1600mm	

Electronic Adjustable Micrometer (L.C. 0.001MM/0.00005")

0-150mm 150-300mm
300-400mm 400-500mm



Screw Thread Micrometer with Metric Interchangeable Anvil (L.C.0.01MM)

0-25mm 25-50mm
50-75mm 75-100mm

Inside Micrometer (L.C.0.01MM)

Jaw Type:	5-30mm	25-50mm	50-75mm	75-100mm
Extension Rod Type:	50-250	50-600mm	50-1000mm	
Interchangeable Rod Type:	25-50mm	50-200mm	50-300mm	



Depth Gauge Micrometer (L.C.0.01MM)

0-25mm 0-100mm
0-150mm 0-200mm
0-300mm

Micrometer Stand

0-100mm



Specialised Products



Digimatic Indicators

0.01x12.7mm
 0.01x25mm
 0.01x50mm
 0.001x12.7mm
 0.001x25mm

Plunger Type Dial Gauge

0.01x10mm
 0.01x30mm
 0.01x50mm
 0.001x1mm
 0.002x5mm



Cylindrical Bore Gauge with Dial

6-10mm 10-18.5mm
 18-35mm* 35-60mm*
 50-160mm* 160-250mm*
 250-450mm 400-800mm
 (*Ceramic Anvil also Available)



Inside Dial Caliper Groove Gauge (L.C.0.01MM)

5-15mm 5-25mm 10-30mm
 20-40mm 40-60mm 30-50mm

Inside Dial Caliper Groove Gauge (L.C.0.01MM)

15-35mm 35-55mm 55-75mm
 75-95mm 95-115mm 115-135mm



Outside Dial Caliper Groove Gauge (L.C. 0.01mm)

0-20mm
 20-40mm
 40-60mm

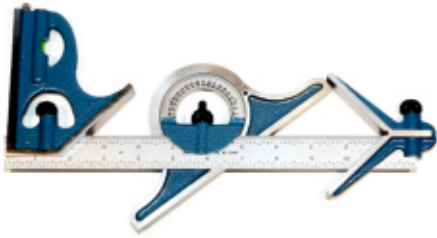


Universal Bevel Protractor with Fine (L.C. 5 MINUTES OF AN ARC)

Digimatic Bevel Protractor (L.C. 0.5 MINUTES OF AN ARC)



Specialised Products

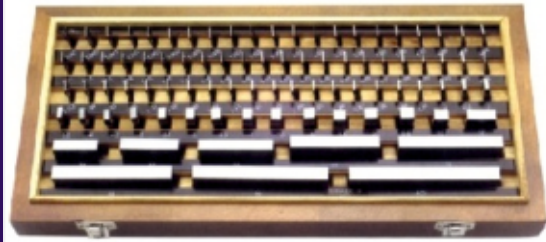


Combination Square Set

300MM/12"
600MM/24"

Slip Gauge Set

Grade 0 , I , II (Test Certificate Provided)
38pcs, 83pcs, 87pcs, 88pcs, 112pcs
Grade 0 (8pcs): Size: 125mm, 150mm, 175mm, 200mm,
250mm, 300mm, 400mm, 500mm



Angle Slip Gauge Set of 12 pcs

Digital Thickness Gauge

0.01x12.7mm
0.01x25mm
0.01x50mm
0.001x12.7mm
0.001x25mm

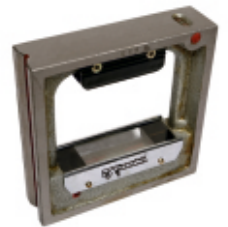


Precision Straight (Block) Level (L.C. 0.02mm/meter)

100mm 150mm
200mm 300mm

Precision Frame (Square) Level (L.C. 0.02mm/meter)

150mmx150mm
200mmx200mm
300mmx300mm



Digital Thickness Gauge Quickmini

(L.C. 0.01mm/0.0005")

0-25mm

Jewel Gauge

(L.C. 0.01mm/0.0005")

0-25mm



Specialised Products



MS 40

UMS 60

HUMS 80

FMS 60

Magnetic Stand

Types:
 Standard (MS40)
 Universal (UMS60)
 Hydraulic (HUMS80)
 Flexible (FMS60)

Laser Distance Measurer

60 meters
 100 meters



Laser Distance Measurer

40 meters



Digital Level with Magnetic Base

Size: 150x52x33mm (6"x2"x1")

Digital Level with Magnetic Base (Box Type)

Size: 55x55x16mm (2"x2"x0.6")



Digital Inclinometer with Laser

225MM/9"
 600MM/24"



Control Try Square with Base Grade "0"

100x70mm 150x100mm
 200x130mm 300x200mm

Bevel (Knife) Edge Square (Grade "00")

50x40mm 75x50mm
 100x70mm 150x100mm
 200x130mm 300x200mm



Digital Weld Gauge (Standard Type)

Knife Edge Straight Edge Grade "0"

50mm 100mm 150mm
 200mm 300mm 400mm



Specialised Products

Rubber Hardness Tester



Export Quality



With Pin Pointer



Without Pin Pointer

Shore-A
Shore-D

Electronic Rubber Hardness Tester



Shore-A
Shore-D

Dial Test Indicator



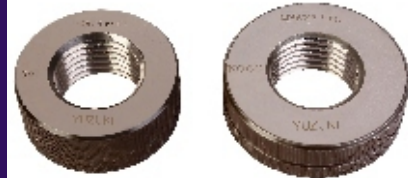
0.01mm x 0.8mm
0.002mm x 0.20mm
0.001mm x 0.14mm

Millimess
(L.C. 0.001mm)



Thread Plug Gauge Thread Ring Gauge (Range 2mm to 200mm)

Also available in
UNC/UNF/BSP/NPT/BSW/BSF/BSPT/NPFT



Plain Ring Gauge

Range: 5-250mm



Plain Plug Gauge

Range 0.5-300mm



Adjustable Snap Gauge

Range 0-150mm

Snap Gauge (Fixed Type)

Range 1-300mm



Pin Gauge Set

Accuracy: 0.002mm

Range 0.20-20mm

Step Available :

0.01mm, 0.02mm, 0.05mm, 0.10mm

(Loose Pins and Pin Gauge with Knob Available)



Specialised Products



Kann

- Plunger Type Dial Gauge
- Dial Thickness Gauge
- Hardness Tester Machine Dial Gauge
- Special Purpose Dial Gauge

Kristeel

- Steel Scale
- Circumference Tape/Pie Tape
- Radius Gauge
- Taper Gauge



Baker

- Dial Gauge
- Dial Test Indicator
- Bore Gauge
- Screw, Plug & Ring Gauge
- Outside Micrometer

Britool

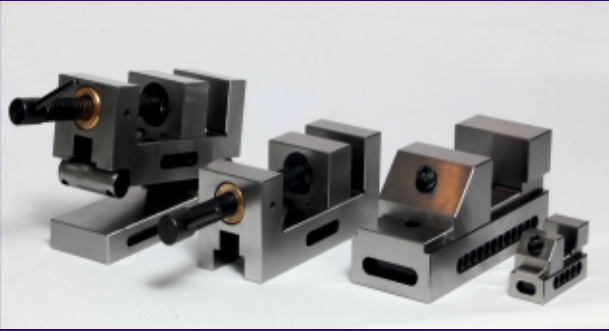
Torque Range NM :
2.5-11, 5-33, 12-68, 25-135, 50-225, 70-330



Teclock

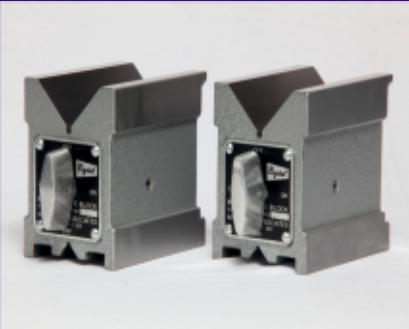
Inside Dial Caliper Gauges
20-35mm
30-62mm
55-153mm

Specialised Products



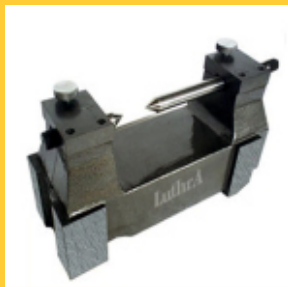
Crystal

- Magnetic V Block
- V-Block with Clamp
- Grinding Vice
- Magnetic Stand
- Try Square
- Magnetic Chuck
- Demagnetiser
- Magnetic Lifter



Luthra

- C.I. Surface Plate
- Granite Surface Plate
- Steel & Granite
Straight Edge
- Bench Centre
- Angle Plate
- Box Angle Plate
- Comparator Stand



Mitutoyo

- Vernier Caliper
- Micrometer
- Inside . Outside
- Depth . Thread . V-Anvil
- Ball Type . Special type
- Dial Gauge
- Magnetic Stand
- Height Gauge
- Slip Gauge
- Surf test
- Bore Gauge



Specialised Products

for ITI, Polytechnic, Engineering Colleges and Tool Rooms

Profile Projector



Floating Carriage Diameter Measuring Machine



Autocollimator



Monochromatic Light



Yuzuki Taper Plug Gauge



Yuzuki Taper Ring Gauge



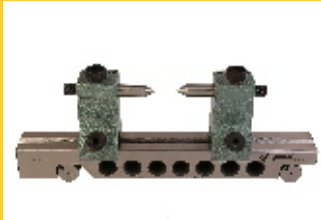
Ring Gauge Set



Plug Gauge Set



Sine Centre



Wear Block



Optical Flat



Comparator Stand



Dial Snap Gauge



Filler Gauge



Digital Surface Roughness Tester



Tachometer



Ultrasonic Digital Thickness Gauge



Digital Coating Thickness Gauge



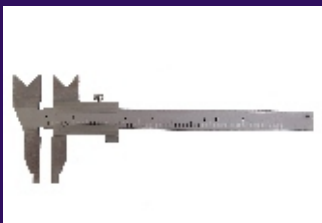
Digital Metal Hardness Tester



Freeman Steel Tape



Textile Caliper



Tonichi Torque Wrench



Digital Measuring Tape



Ultrasonic Distance Measurer



Stockist Of :

Crystal
Luthra
Mitutoyo
Adis
Dipel
Gaugewell
Yuyustu
Globe
GG Instruments
Metzer
Swastik
Advance
Nirdhar
Kristeel
Micro Supreme
Mikronix
Baker
Hi-tec
Teclock
Tohnichi
Unity
Britool

Specialized Instruments for

Industrial Training Institute (I.T.I), Polytechnic & Engineering College.

Caliper(Vernier, Dial, Electronic,
Carbide Tipped, Textile, Long Jaw, Groove)
Micrometer(Standard and Special Types)
Depth Micrometer
Comparator Stand
Dial Gauge and Magnetic Stand
Plain / Taper Ring Gauge
Plain / Taper Plug Gauge
Snap Gauges
Thread Plug and Ring Gauge
Optical Flat
Sine Bar and Sine Centre
Monochromatic Light Unit
Autocollimator
Angle Deckor
Floating Carriage Diameter Measuring Machine
Carbide Wear Block
Profile Projector

IMGS

Industrial MILL GIN STORES

www.yuzuki.co.in



SCAN QR TO ADD CONTACT

Office Address :

9, Industrial House, 51/53, Nagdevi Cross Lane, Mumbai - 400 003.

Branch Office :

A-160 Antop Hill Warehouse Complex, Salt Pan Road, Near Barkati Naka,
Wadala (E), Mumbai - 400 037

Mobile : +91 98199 06877 +91 81086 85951 (📞)

Email : sales@yuzuki.co.in